



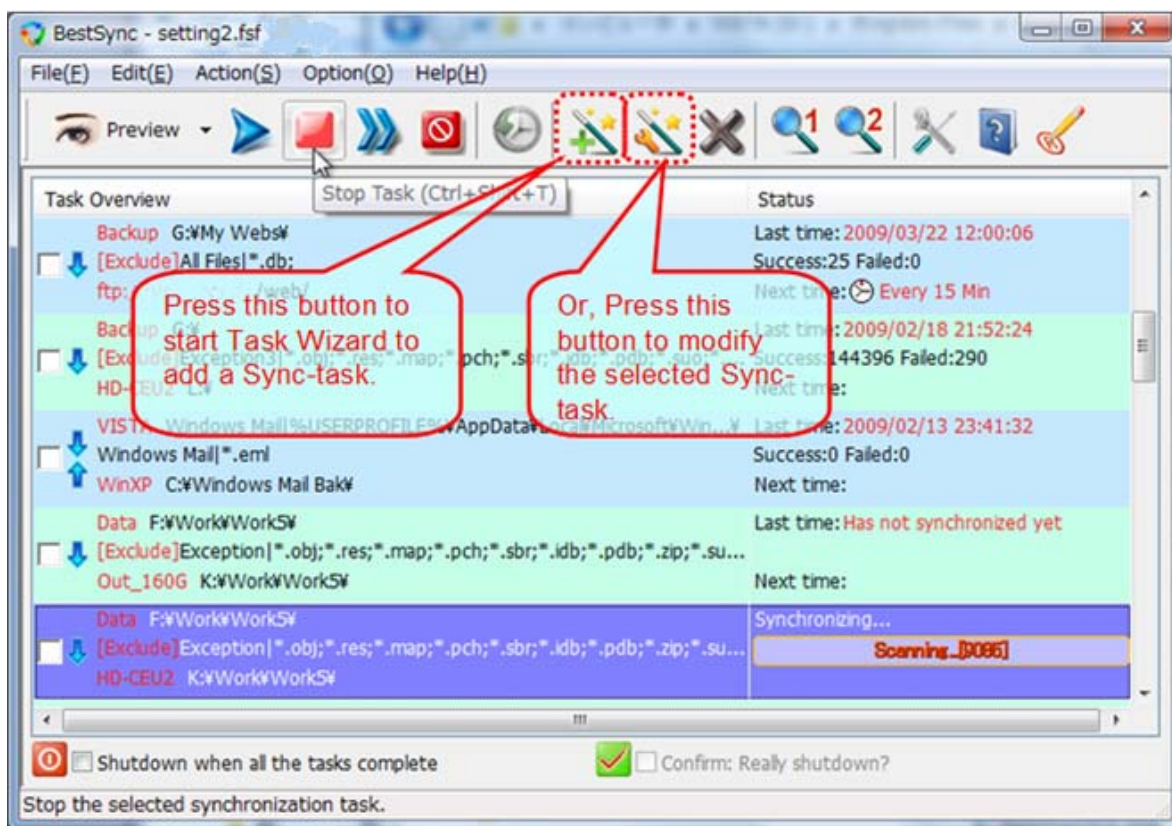
BestSync Tutorial

Synchronize with a network shared folder

This tutorial demonstrates how to setup a task to synchronize with a folder in network server, and run the task as a Windows Service.

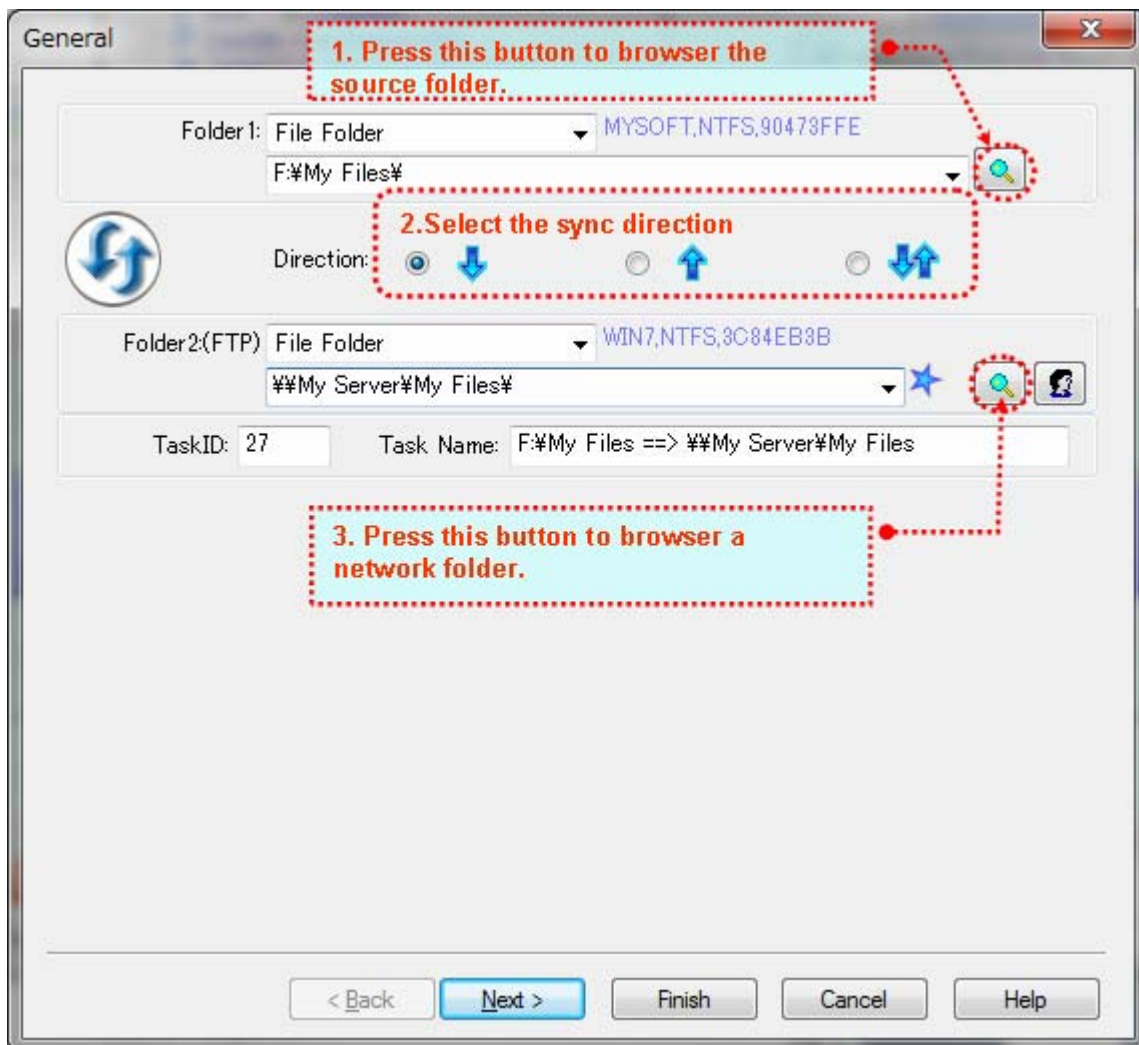
1. On the main windows, press the "Add task" button () to add a task.

After you add a task, you can modify it later by press the "Setup task" button ().





The task wizard starts up.

2. On the "General" wizard page, set the local folder, sync direction and the remote folder like the following graph.




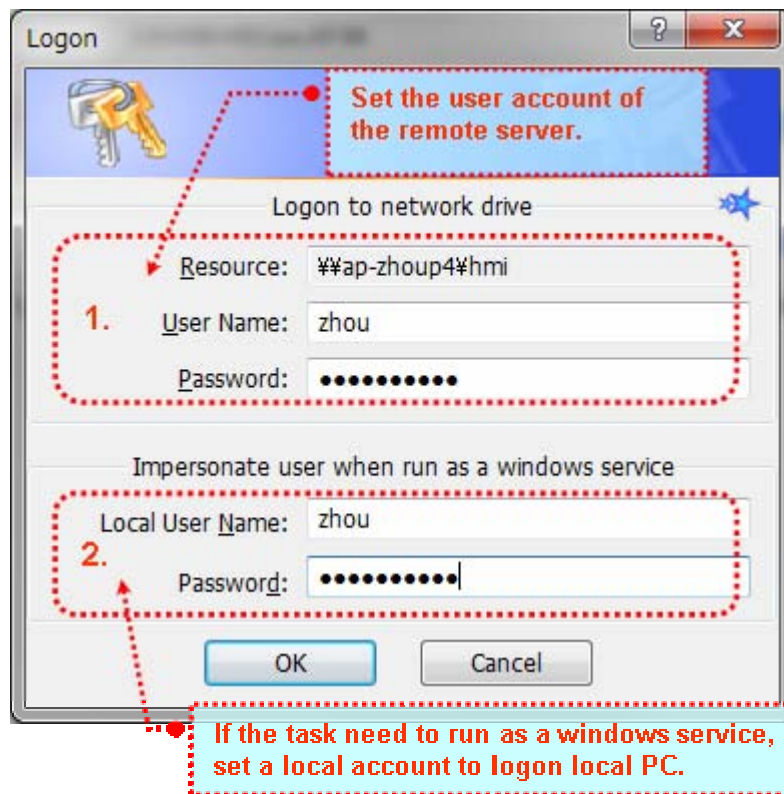
If you have not login the remote PC, you can input the remote folder name directly like following:

¥¥My Server¥My Files¥

After the remote folder is set, the  button is shown on the right side of the  button.

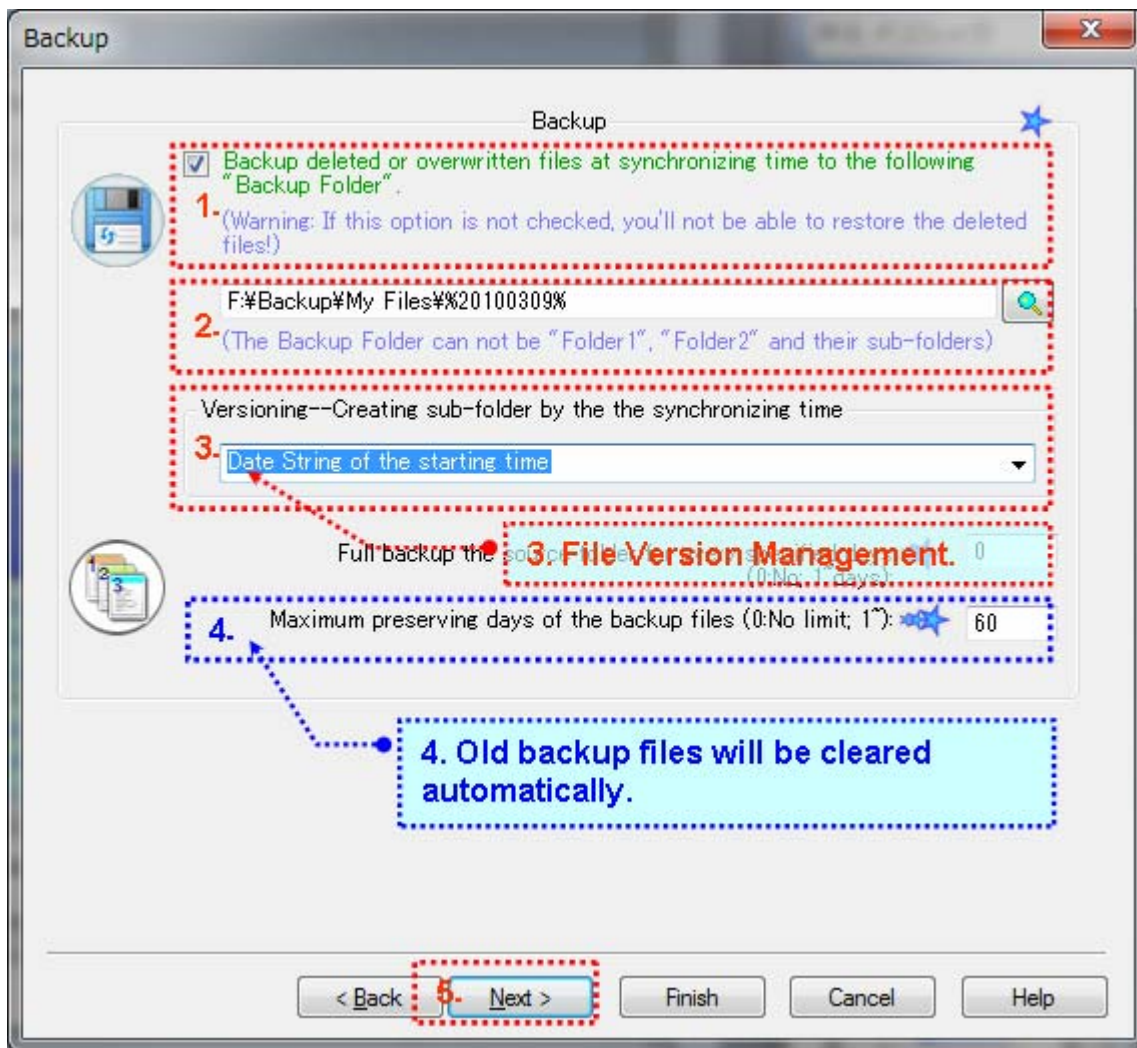
3. Setup the logon account of the remote folder, and a local account to impersonate user. If the task needs to run as Windows Service, it needs a local user account to impersonate a user to access the network resource. And it also needs a remote account to logon to the remote PC.

Press the  button on the right of the "Folder2"(the remote folder), the "Logon" dialog box pops up, set the two accounts like following graph.



4. Backup all the changed files to a backup folder if you need.

During synchronization, the updated files are copied to the target folder, and the deleted files are also deleted from the target folder (according to the deletion options in the "delete" wizard page that will be setup later). You can backup these CHANGED FILES (overwritten files and deleted files in the target folder) to the backup folder by the "backup" options like following graph.

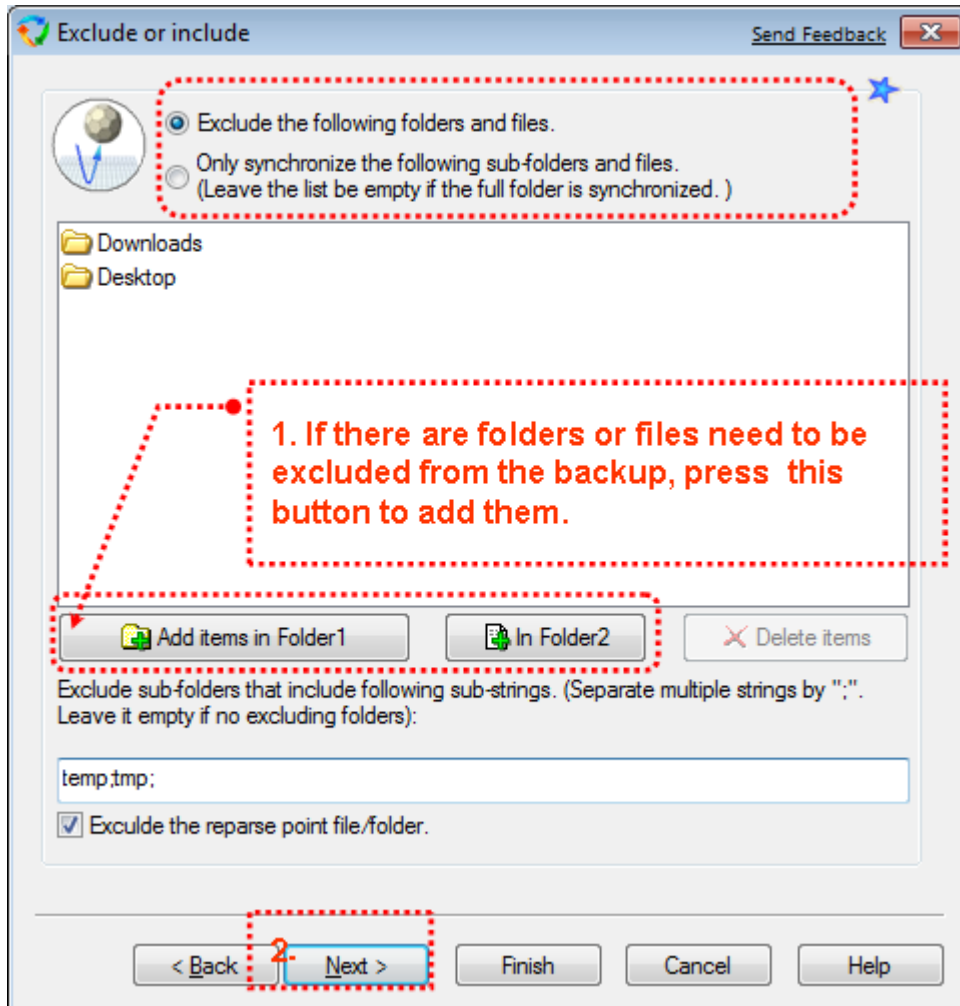


And you can save the versions of the CHANGED FILES into sub-folders that is created automatically by the "Versioning—Create sub-folder by the synchronizing time".

If you want to clear the versions of the backup file automatically, type a day number for preserving the old files. The backup files that are older than the designated days will be cleared automatically. If you do not want to clear the old files, type 0.

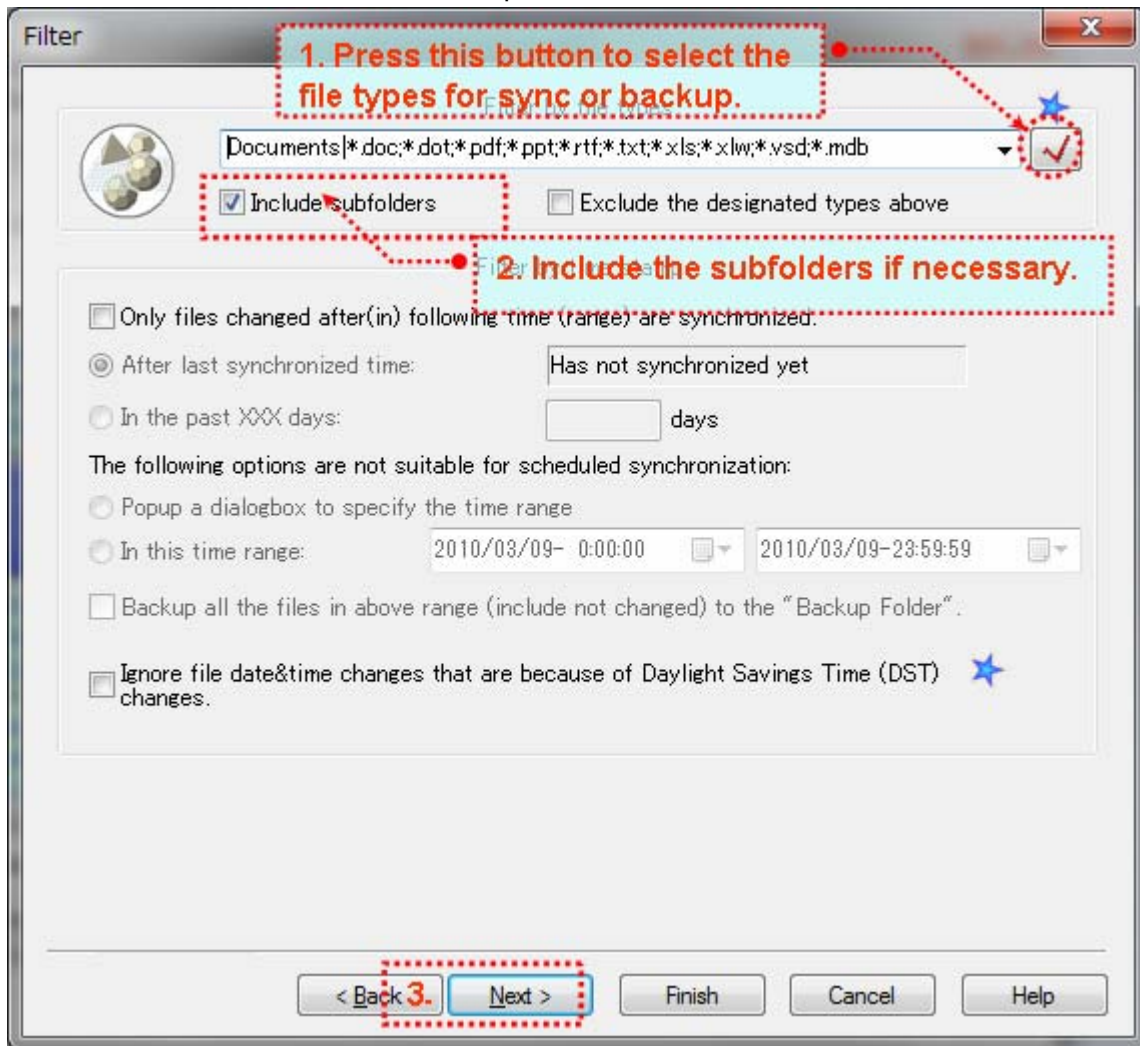
Press the "Next" button to go to the next page.

5. Exclude or include some folders or files into the synchronization task.
 If no folders or files are needed to be excluded from the synchronization, just click "Next" button.



6. Select file types that are needed to be synchronized.

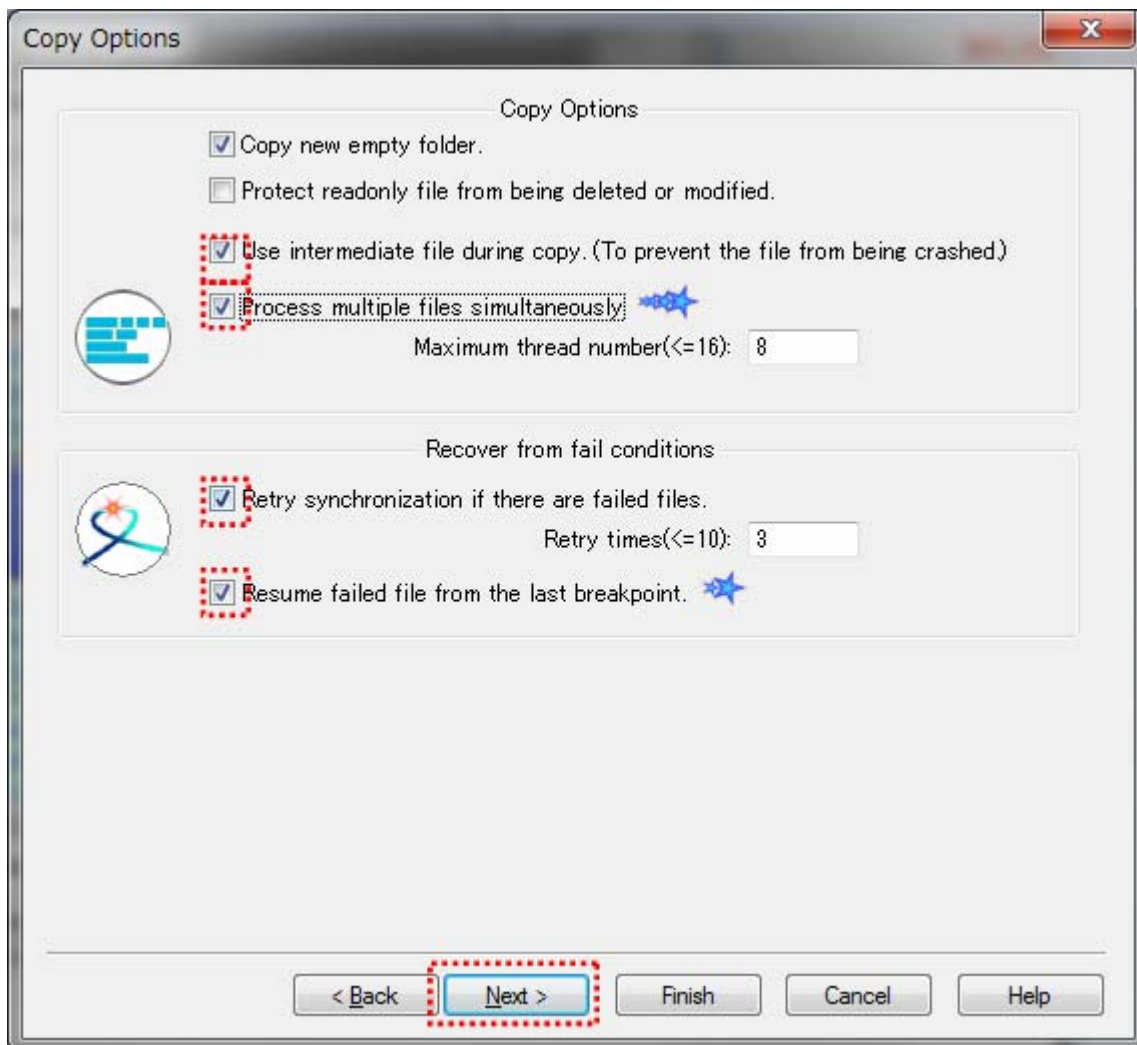
Check "Include subfolders" to backup file in all the sub-folders.



If your country uses Daylight Savings Time, and one of the two folders is FAT or FAT32 file system, please select the "Ignore file date&time changes that are because of Daylight Savings Time (DST) changes" option, otherwise, when the DST changes, all the files may copied again. Press the "Next" button to go to the next page.

7. Select the necessary copy options.

The following graph is the recommended copy options.



“Use intermediate file during copy. (To prevent the file from being crashed.)” option:

If this option is checked, BestSync will use an intermediate file as the target file during copying process. When the file is copied successfully, the intermediate file is renamed to the target file. This action avoids an incomplete file in the target folder, and the target file is never cached even if it fails to copy the file due to any error (such as network error).

“Process multiple files simultaneously.” Option:

This option will improve the performance dramatically when synchronize with network folder.

“Retry synchronization if there are failed files.” Option:

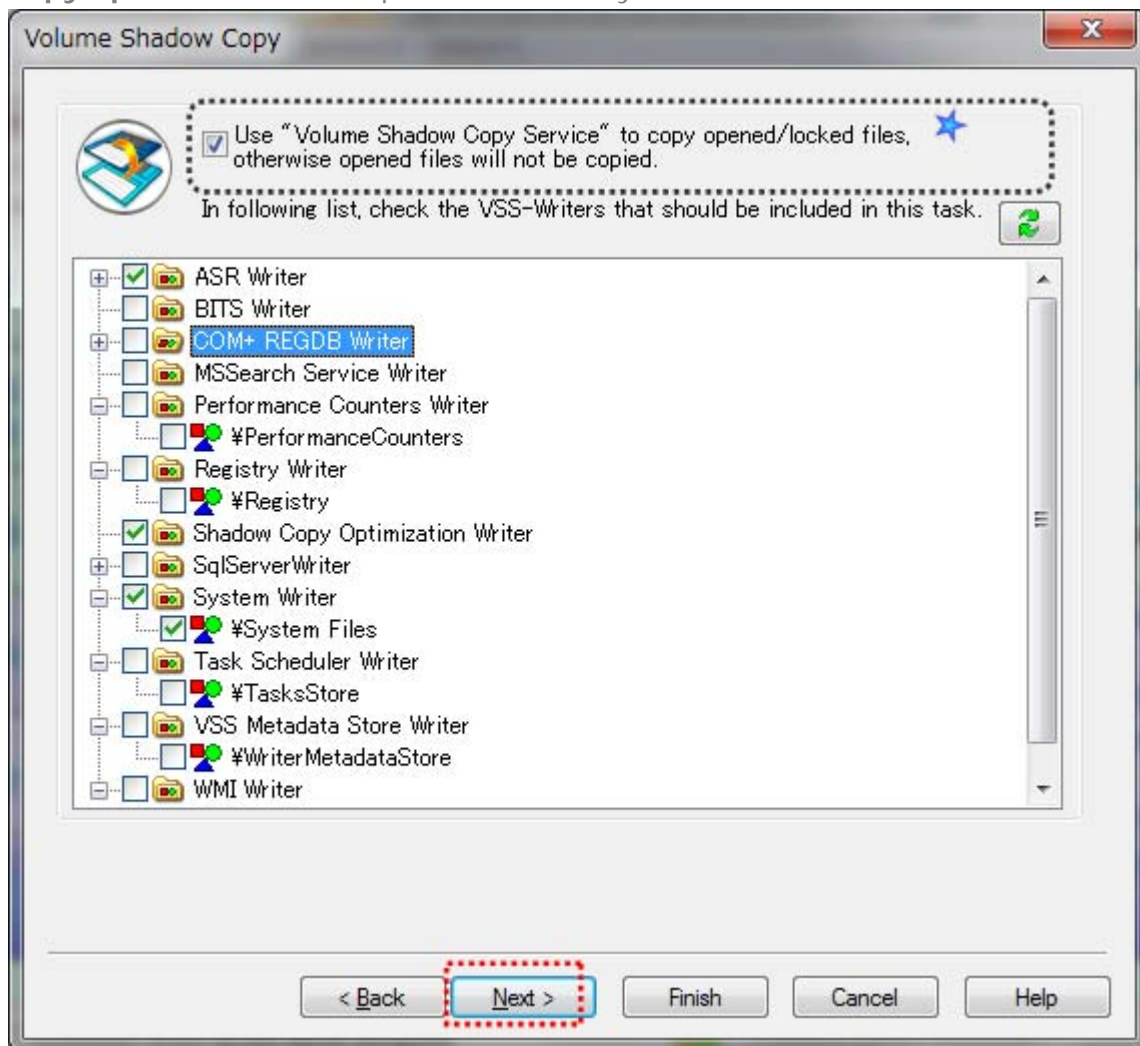
If this option is checked, BestSync will retry the synchronization if there are failed items.

“Resume failed file from the breakpoint.” Option:

If this option is checked, BestSync will resume the file copy operation from the last breakpoint. This option is very useful to copy a large file to/from FTP server or network drive. If a file copy action is broken during network error, the file copy action is continued from the last breakpoint.

8. The "Volume Shadow Copy" options are optional.

If the task needs to copy the opened/locked files, "Use "Volume Shadow Copy Service" to copy opened files....." option is necessary.



If this option is checked, the opened files such as windows registry file, data base file, Outlook .PST files can also be copied. Some files such as the database file, and Outlook PST file are always locked, if you do not use this option, copying these files will fail.

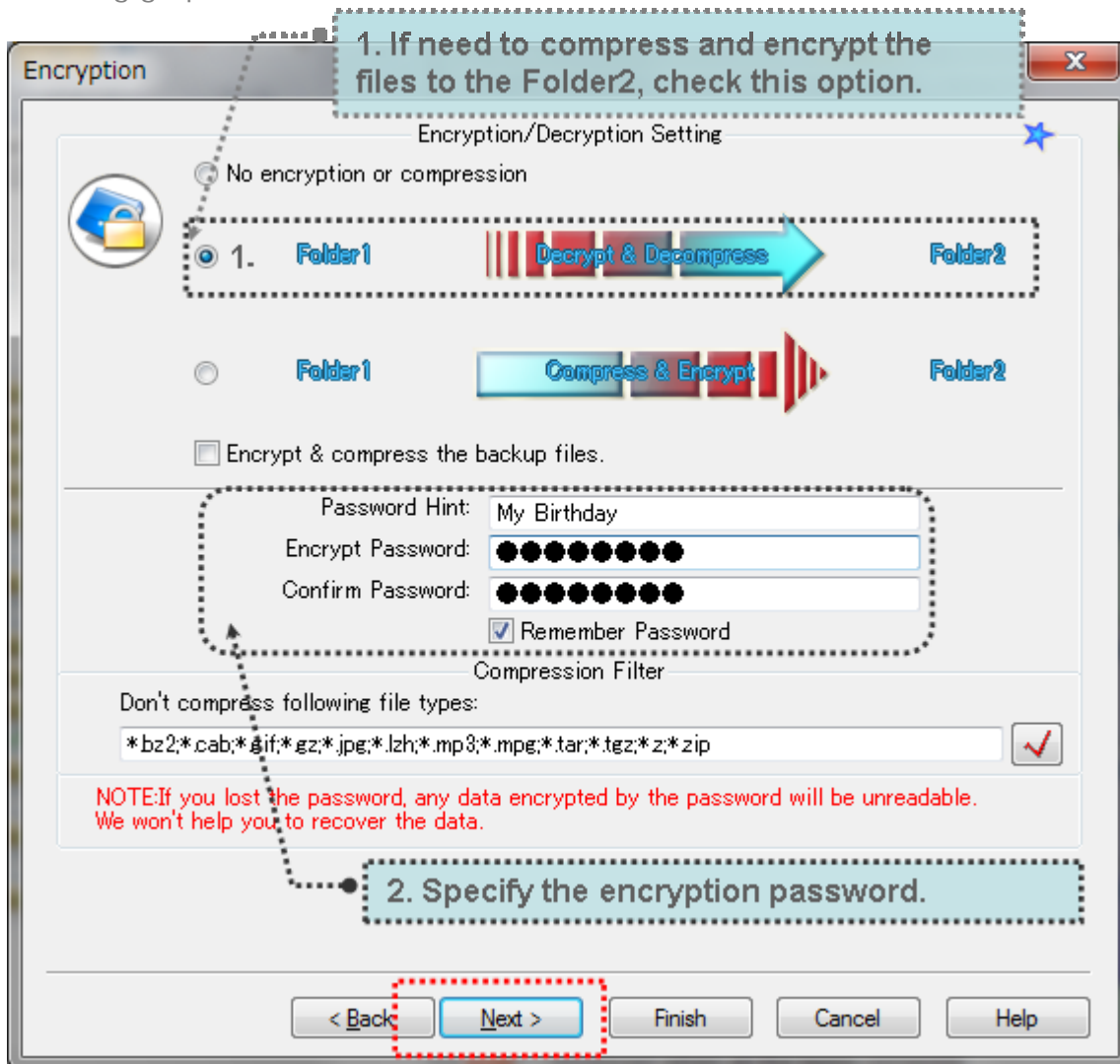
If your OS is 64 Bit Windows, please download and install the x64 Bit version of BestSync for using this option.

On Windows VISTA, or Windows 7, please run BestSync by the administrator privilege when this option is checked.

Press the "Next" button to go to the next page.

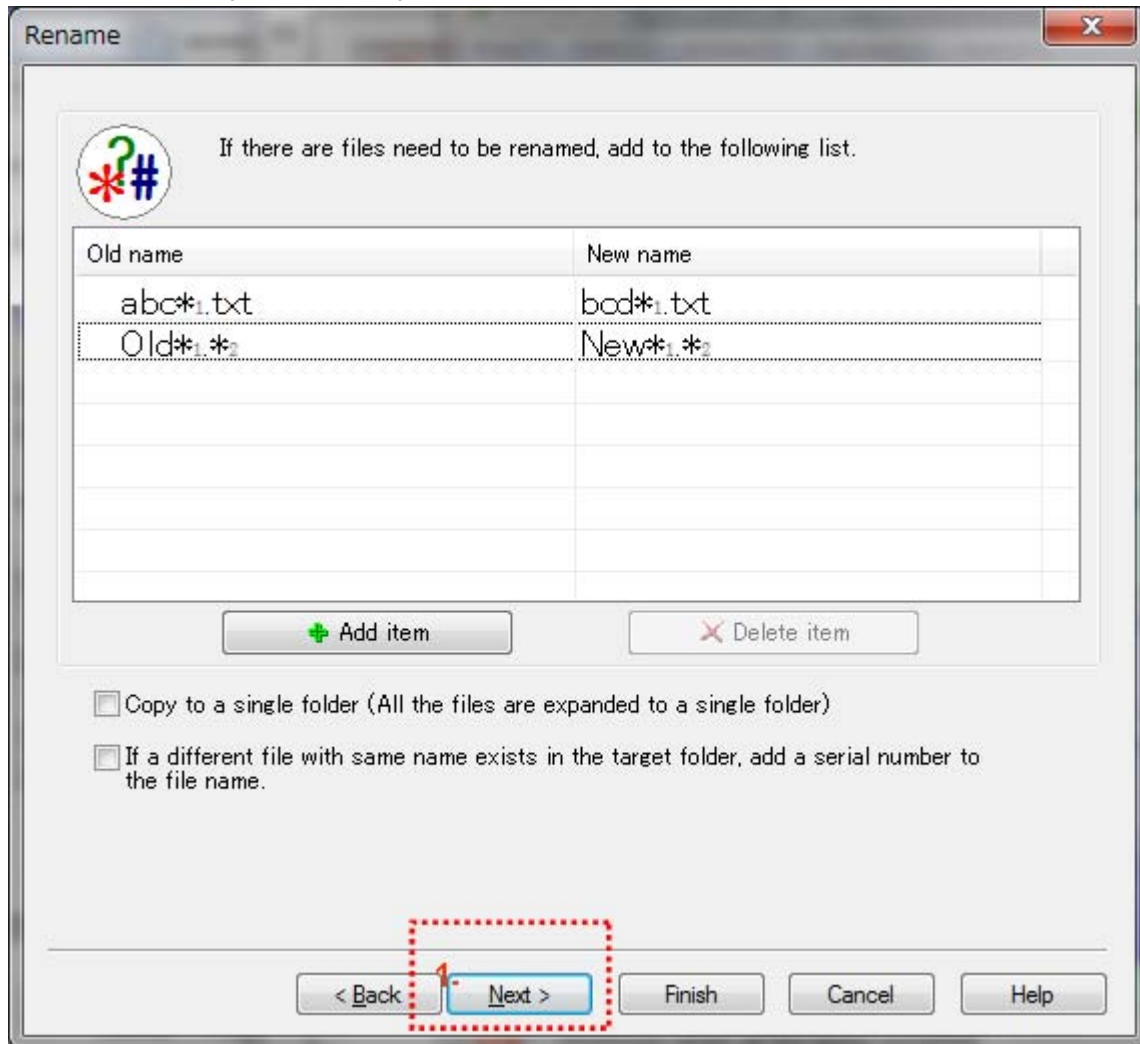
9. The "Encryption" options are optional.

If you want to compress and encrypt the files while backup the files, select the options like following graphic.



Press the "Next" button to go to the next page.

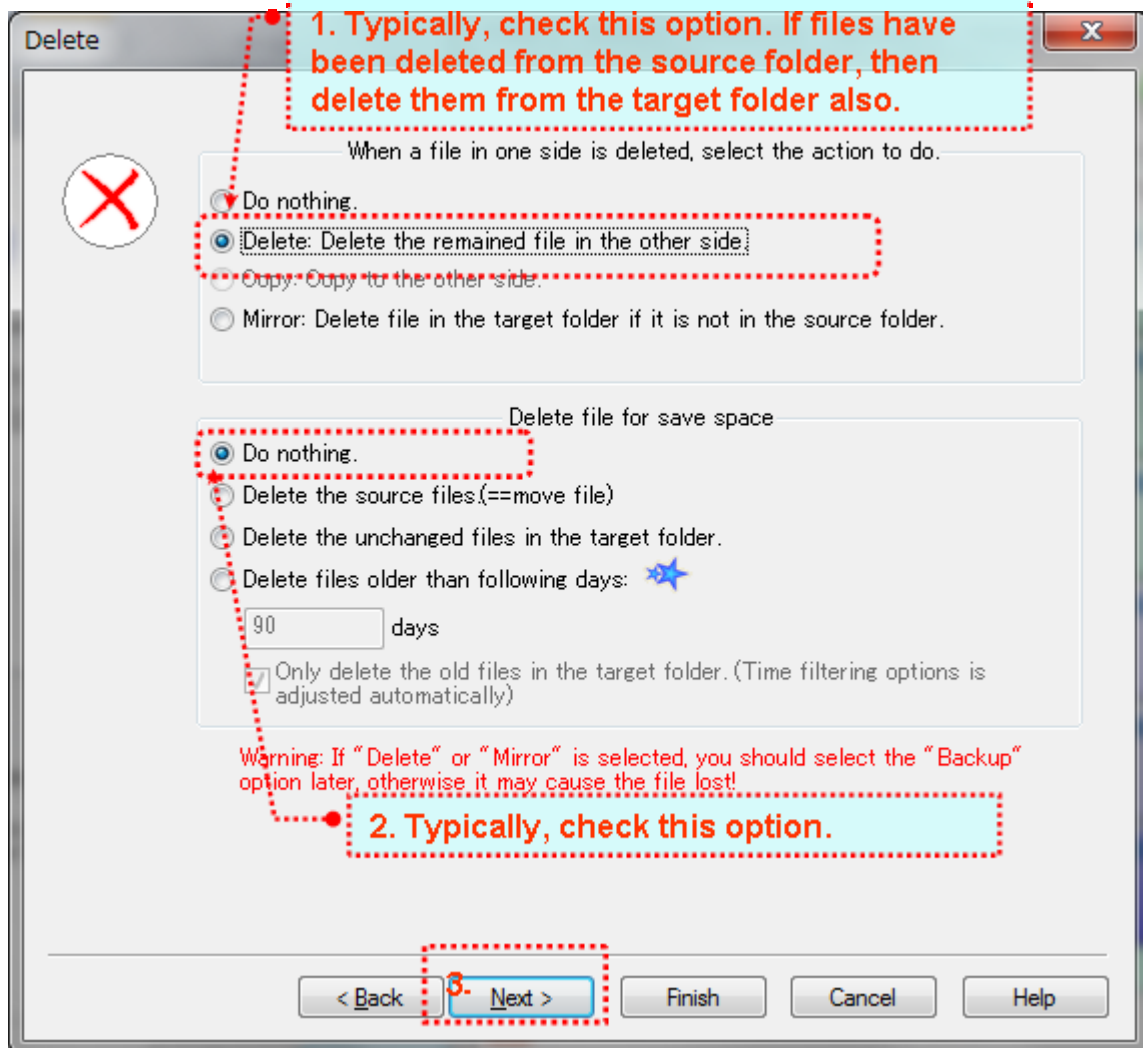
10. The "Rename" options are optional.



Press the "Next" button to go to the next page.

11. Select the "Delete" options as you prefer.

The typical option is "Delete: Delete the remained file in the other side".



(1) "Do nothing". If you want to use a backup profile, that deleted files from the source will be kept in your Target Folder.

(2) Or, "Delete: Delete remained file in the other side". If the files are deleted from the source, it will also be deleted from target folder.

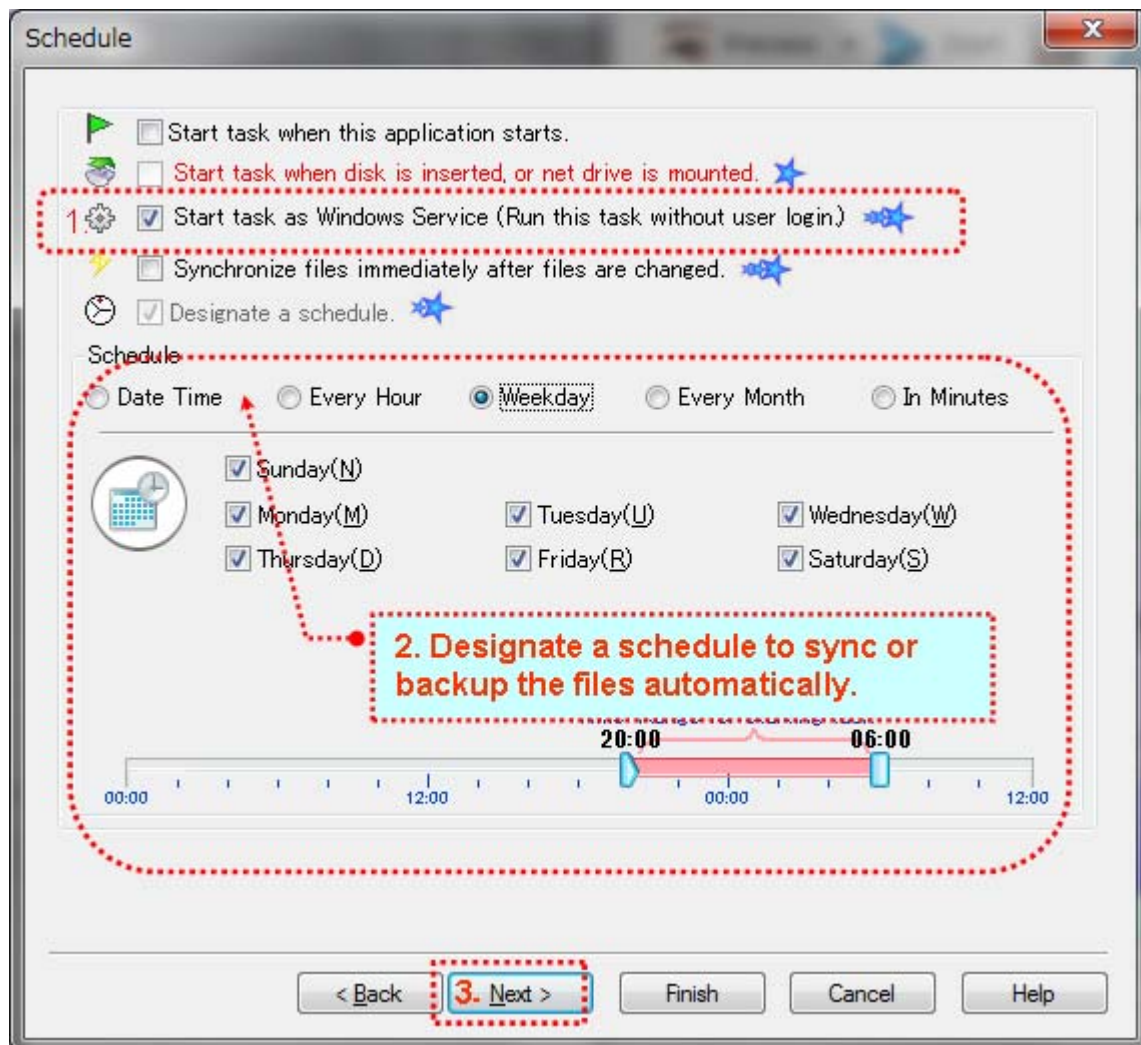
(3) Or, "Mirror: Delete file in". To make the contents of both folders identical. All the files that do not exist in the source folder will be deleted from the target folder. **If the files in the source folder are old, the old files will overwrite the new files in the target folder.**

(4) Leave "Do nothing" selected, in "Delete file for save space".

Press the "Next" button to go to the next page.

12. Designate a schedule to start the task automatically.

Select "Designate a schedule", and select a time mode to start the schedule.

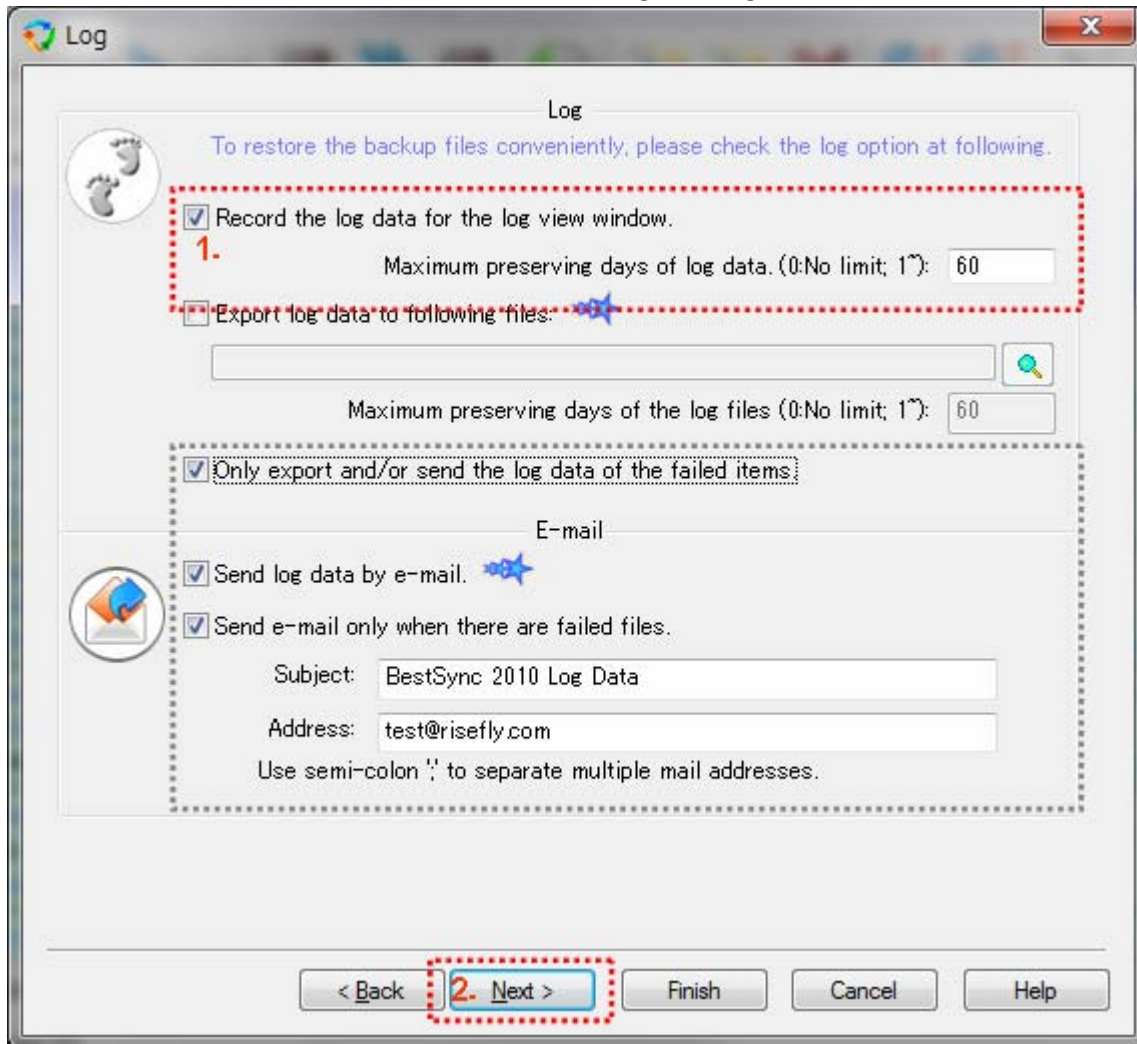


Check "Start task as service (Run this task without user login)" option, this task will be ran by BestSync Service. Even no user is logging on, or the user logs off, this task is still run by the designated schedule.

If you want the changed files be backed up or synchronized immediately after they are changed, select the "Synchronize files immediately after they are changed". If this option is selected, the task will be started immediately after BestSync is started.

Press the "Next" button to go to the next page.

13. Press the "Next" button, to use the default log setting.

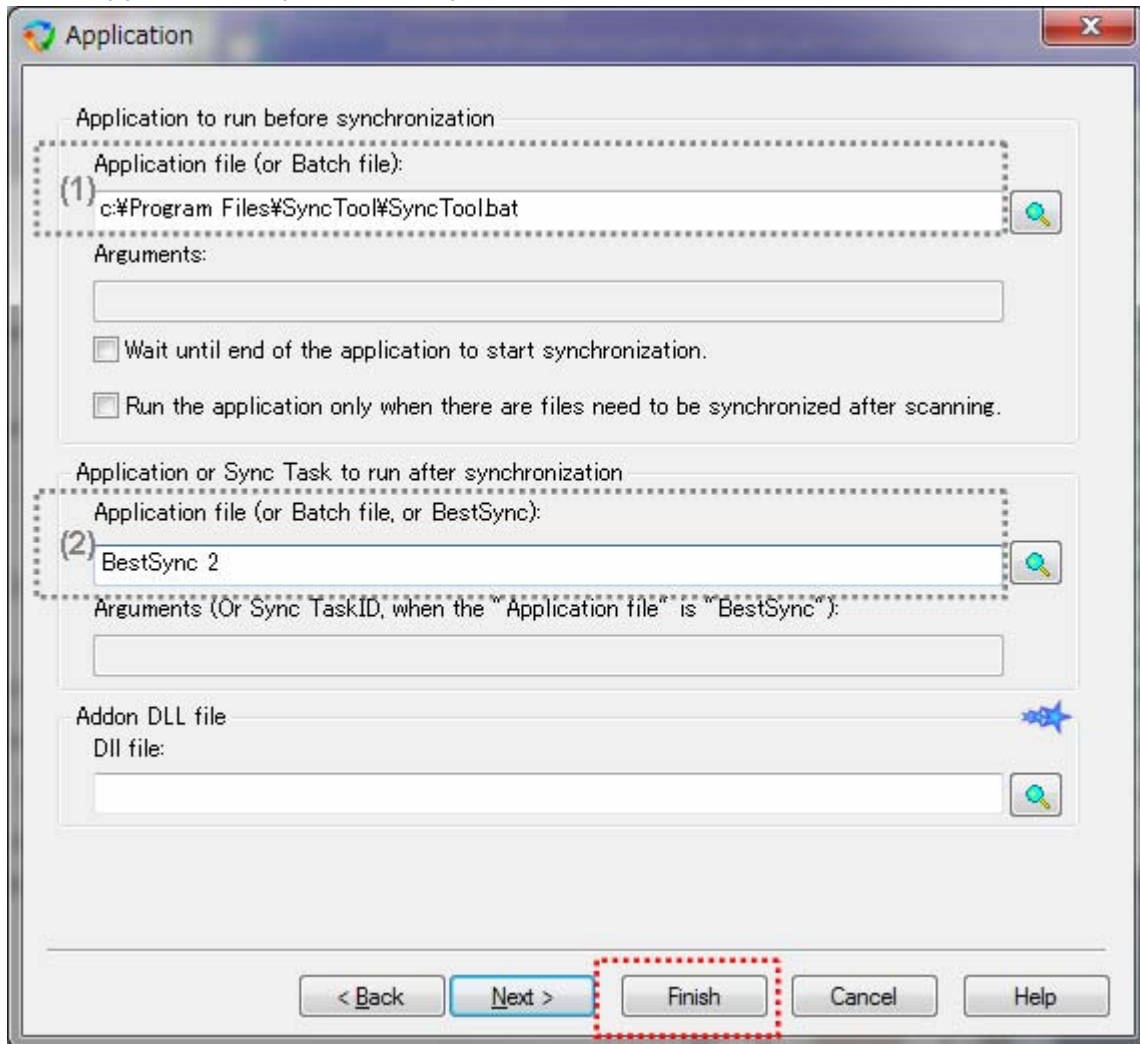


Check the "Record the log data for the log view window" option. This option will record the log data of the synchronization. You can view the log data by the Log View, and if you have setup the "Backup" option in "step 4", you can also restore the backup data conveniently in the Log View.

If you want to send the log data by the email to monitor the synchronization remotely, check the "Send log data by e-mail" option. After this option is checked, the "General Option" "Email" dialog box will popup, you can setup the email account in the dialog box.

Press the "Next" button to go to the next page.

14. The "Application" options are optional.

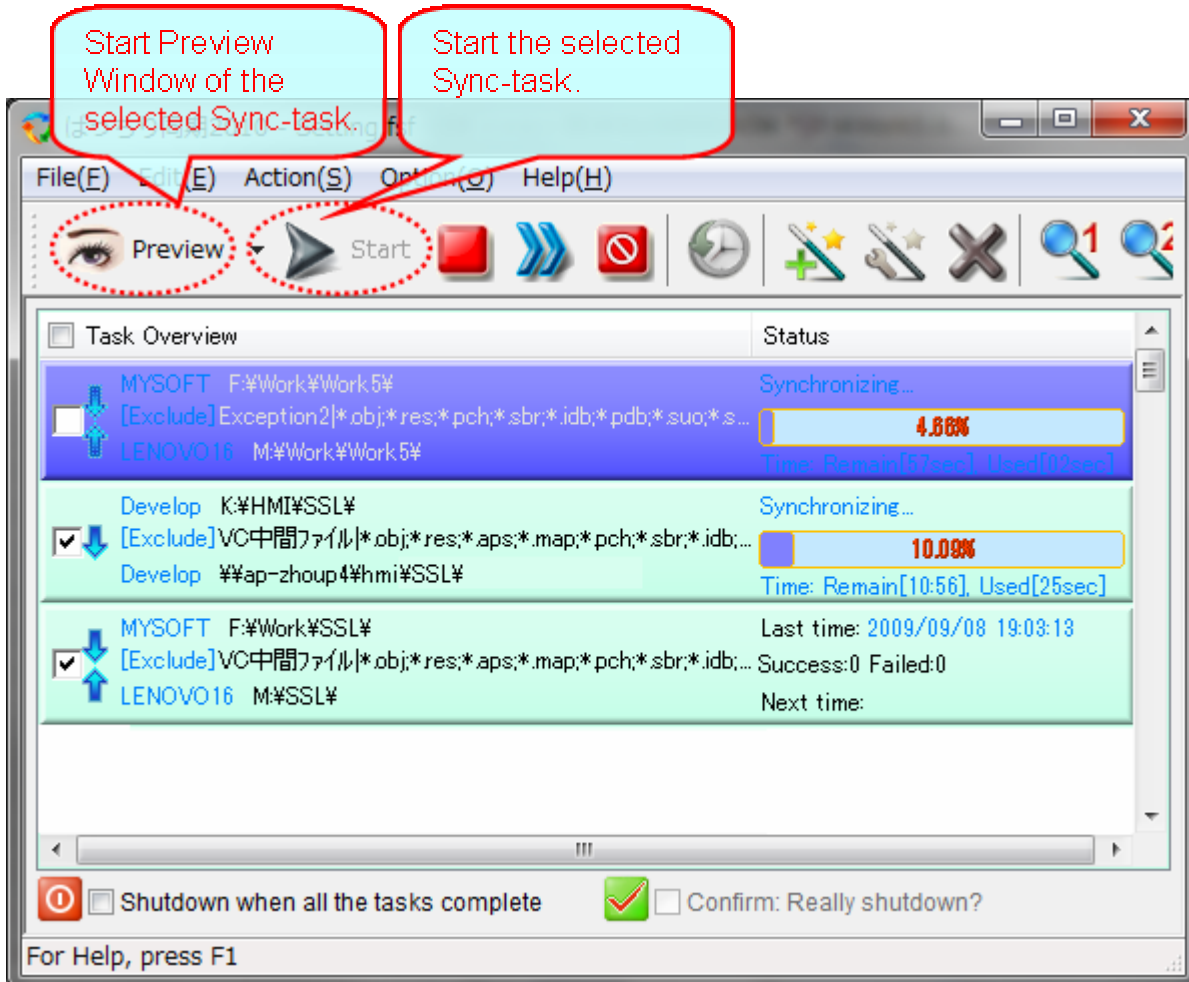


If you want a program or batch file be started just before the synchronization is started, set the program and argument like step (1) in the above graph.

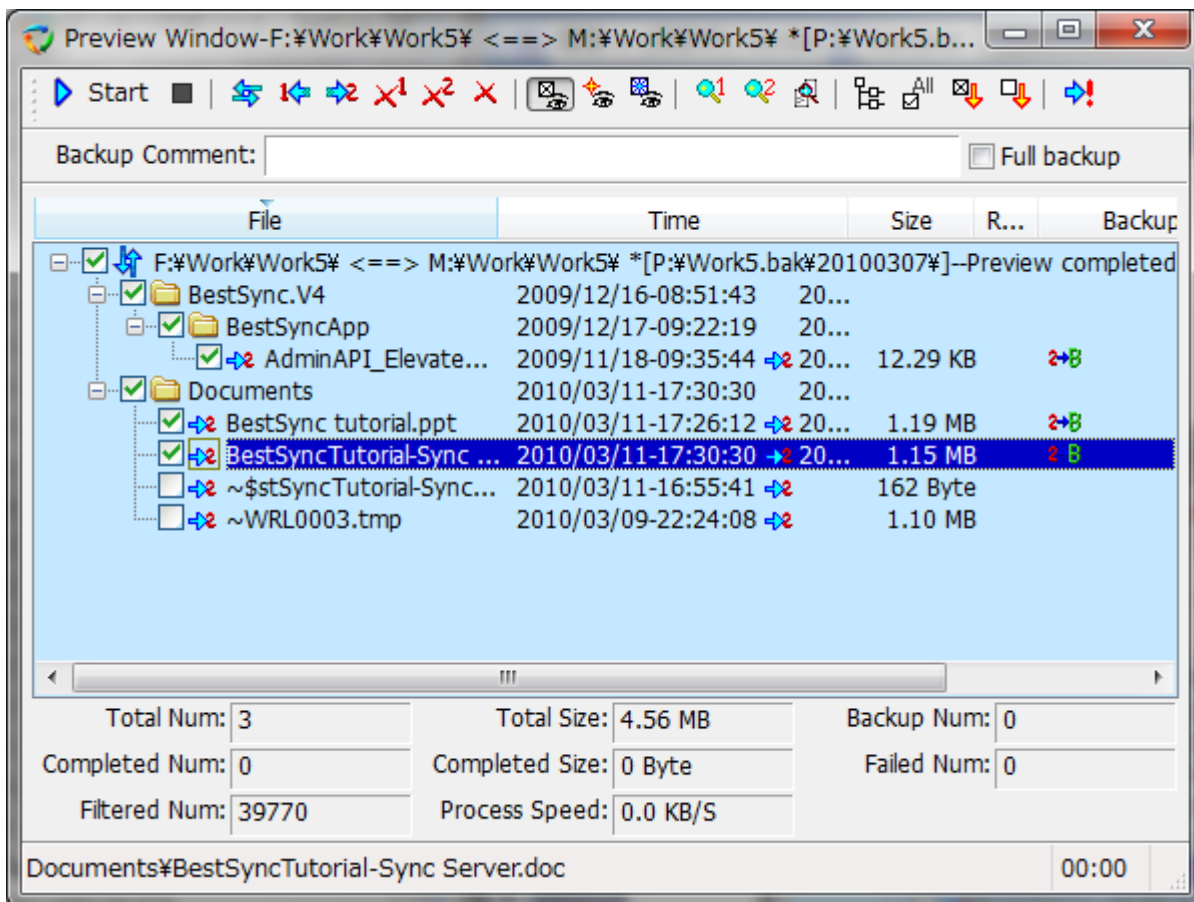
You can also designate the Task be ran after this task like step (2) in the above graph.

Press "Finish" for the "Application" Wizard Page.

15. Press the "Preview" button to start the preview window, to view the hit files and modify the sync actions of sub-folders of individual files if necessary.
 Or just press the "Start" button to synchronize the files immediately.



BestSync Main Window



BestSync PreView Window

(End)